

We're in the

PINK WINDOW PARADE!

supporting:

abc Jersey
a brighter community

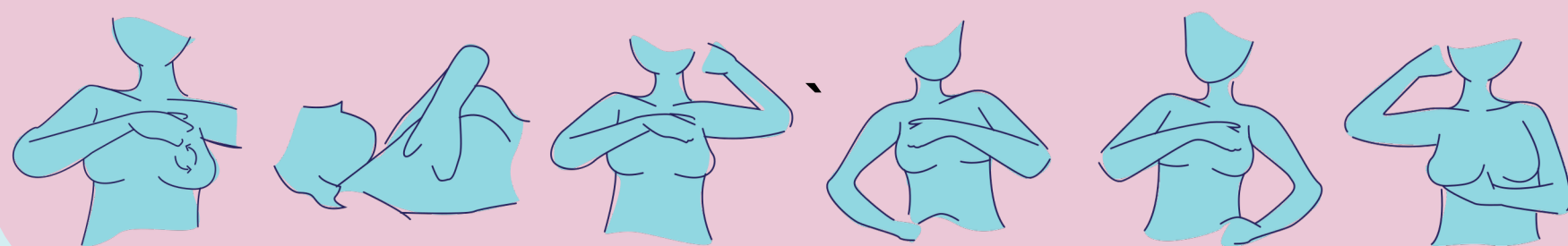


Scan to make a difference

Around 100 people are diagnosed with breast cancer in Jersey each year.

Early detection saves lives - and raising awareness of the signs can help more people get diagnosed earlier, with better outcomes. When was the last time you gave yourself some **TLC**?

TOUCH your chest, can you feel anything new or unusual? **LOOK** for changes, does anything look different? **CHECK** any changes with your GP



Want to join?

www.abc.org.je/events/pinkwindowparade/

#ABCPINKWINDOWPARADE @ABCJERSEY